

Essex Small Growth

Product Base Currency of US Dollar (USD)

Track Record: USA - SA - Composite - Essex Small Growth - Gross of Fees Risk Index: Russell 2000 Growth Risk-Free Index: FTSE 3-Month T-Bill Frequency: Monthly

General Information

Asset Class:	United States - Equity
Primary Universe:	eVestment US Small Cap Growth Equity
Marketing Contact:	Ken Rogers
Title:	Marketing Contact
Phone / Fax:	914-251-1084 /
Email Address:	ken@arrowpartners.com

Key Facts

Primary Capitalization:	Small Cap
Primary Style Emphasis:	Growth
Preferred Benchmark:	Russell 2000 Growth
Total Product Assets:	\$222.3
Total Product Accounts:	11
Product Offered As:	SA
Investment Focus:	Long Only
Status:	Active

Asset & Account Information

Current Totals	Assets (M)	Accounts	Assets by Vehicle Type	Assets (M)
Product	\$222.3	11	Separate / Segregated	\$163.2
Taxable	\$60.3	2	Pooled / Commingled	\$0.0
Tax-Exempt	\$162.1	9	Mutual Fund / Institutional	\$59.1
Institutional	\$221.2	10	Mutual Fund / Retail	\$0.0

Gained	Accounts	Assets (M)	% Product Assets	Lost	Accounts	Assets (M)	% Product Assets
MRQ	---	---	---	MRQ	---	---	---
YTD	---	---	---	YTD	---	---	---
2023	0	\$0.0	0.0%	2023	0	\$0.0	0.0%
2022	2	\$15.1	10.5%	2022	0	\$0.0	0.0%

Portfolio Characteristics

<b>Strategy Snapshot</b>		<b>Fundamental Characteristics</b>		<b>Market Capitalization Breakdown</b>	
Primary Capitalization:	Small Cap	Current Cash Position:	4.1%	> \$50 Billion:	---
Primary Style Emphasis:	Growth	Annual Turnover (LTM):	65%	\$15-50 Billion:	---
Preferred Benchmark:	Russell 2000 Growth	Current P / E (12-mo Trailing):	27.82x	\$7.5-15 Billion:	---
Secondary Style Emphasis:	Not Applicable	Current P / B (12-mo Trailing):	2.89x	\$1.5-7.5 Billion:	---
Current Number Of Holdings:	101	Current P / S (12-mo Trailing):	1.14x	\$750 Million-1.5 Billion:	---
Foreign Securities Utilized:	---	Earnings Growth (Past 5 Yrs):	---	\$400 Million-750 Million:	---
Approach Towards Currency Hedging:	---	Weighted Avg. Mkt Cap (M):	\$1,796	< \$400 Million:	---
% Hedged Back to Local Currency:	---	Median Market Cap (M):	\$640		
% Max Allowed in Emerging Markets:	---				
Derivatives Utilized:	No				

Performance Information USD

Trailing Periods	Returns			Std Dev	Alpha	Beta	Trk Error	Info Ratio	Sharpe Ratio
	Product	Benchmark	Excess						
1 Year	9.41	20.35	-10.94	25.22	-10.22	1.07	4.04	-2.71	0.16
2 Year	-0.54	3.73	-4.27	28.01	-4.04	1.11	6.22	-0.69	-0.16
3 Year	-4.02	-2.68	-1.34	25.37	-0.67	1.10	6.06	-0.22	-0.26
4 Year	20.94	15.07	5.87	27.48	4.19	1.11	8.51	0.69	0.69
5 Year	8.89	7.38	1.51	28.49	1.25	1.14	8.53	0.18	0.24
6 Year	8.94	6.78	2.15	27.91	1.95	1.12	8.04	0.27	0.25
7 Year	10.65	8.40	2.25	26.08	1.74	1.12	7.61	0.30	0.33
8 Year	12.16	10.13	2.04	24.79	1.34	1.11	7.39	0.28	0.42
9 Year	8.78	7.44	1.34	24.25	1.06	1.09	7.16	0.19	0.30
10 Year	8.51	7.89	0.62	23.51	0.40	1.08	7.08	0.09	0.30
Since Inception (10/2000)	10.99	6.03	4.95	23.05	5.02	1.00	7.70	0.64	0.41

Returns	MRQ	YTD	2023	2022	2021	2020	2019	2018	2017
Product	6.55	6.55	10.02	-27.83	29.85	27.76	27.42	-4.88	25.88
Benchmark	7.58	7.58	18.66	-26.36	2.83	34.63	28.48	-9.31	22.17
Excess	-1.03	-1.03	-8.64	-1.47	27.01	-6.87	-1.07	4.42	3.71

Fee Information

Vehicle Type	Available	Min. Size (M)	Minimum Fee
Separate / Segregated	Open	\$3.00	\$30,000.00
Pooled / Commingled	Not Available	---	---
Institutional MFs	Open	---	---

Fees By Acct. Size	\$25M	\$50M	\$75M	\$100M
Separate / Segregated	\$240,000	\$445,000	\$645,000	\$845,000
	96 bps	89 bps	86 bps	85 bps
Pooled / Commingled	---	---	---	---
Institutional MFs	---	---	---	---

Professional Information

Team Description	No.	Avg. Yrs. Exp.	Avg. Yrs. @ Firm
Portfolio Managers	1	40	19
Research Analysts	3	24	16
Traders	0	0	0
Risk Portfolio / Monitoring	0	0	0

Professional Turnover	Portfolio Mgrs.	Analysts
Professionals Gained	MRQ	0
	2023	0
	2022	0
Professionals Lost	MRQ	0
	2023	0
	2022	1
	2021	0

Performance data displayed in Product Base Currency of US Dollar (USD) using Spot Rate (SR) conversion method.



eVestment Alliance, LLC and its affiliated entities (collectively "Nasdaq eVestment") collect information directly from investment management firms and other sources believed to be reliable, however, eVestment does not guarantee or warrant the accuracy, timeliness, or completeness of the information provided and is not responsible for any errors or omissions. Performance results may be provided with additional disclosures available on eVestment's systems and other important considerations such as fees that may be applicable. Not for general distribution and limited distribution may only be made pursuant to client's agreement terms. \* All categories not necessarily included, Totals may not equal 100%. Copyright © Nasdaq. All Rights Reserved.

Essex Small Growth

Track Record: USA - SA - Composite - Essex Small Growth - Gross of Fees Risk Index: Russell 2000 Growth Risk-Free Index: FTSE 3-Month T-Bill Frequency: Monthly

Product Base Currency of US Dollar (USD)

General Information

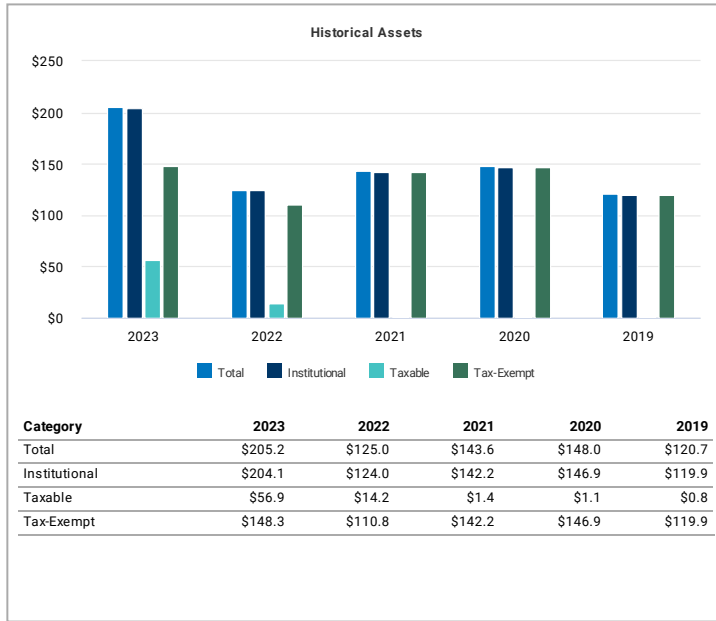
Asset Class: United States - Equity  
 Primary Universe: eVestment US Small Cap Growth Equity  
 Marketing Contact: Ken Rogers  
 Title: Marketing Contact  
 Phone / Fax: 914-251-1084 /  
 Email Address: ken@arrowpartners.com

Key Facts

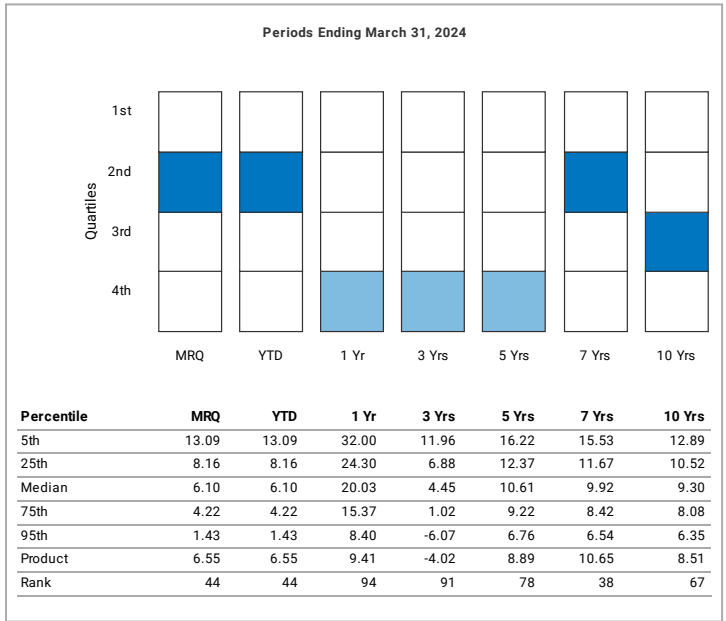
Primary Capitalization: Small Cap Growth  
 Primary Style Emphasis: Growth  
 Preferred Benchmark: Russell 2000 Growth  
 Total Product Assets: \$222.3  
 Total Product Accounts: 11  
 Product Offered As: SA  
 Investment Focus: Long Only  
 Status: Active

Historical Product Assets & Universe Ranking Analysis vs US Small Cap Equity

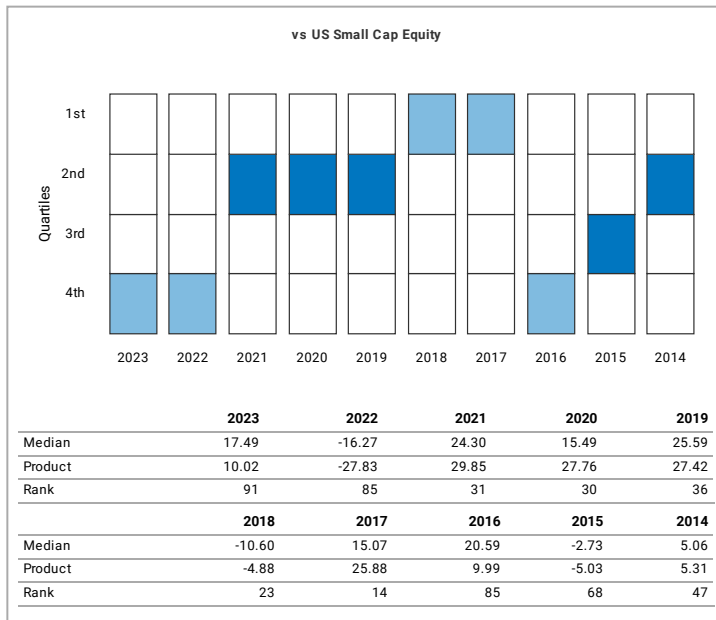
Historical Product Assets



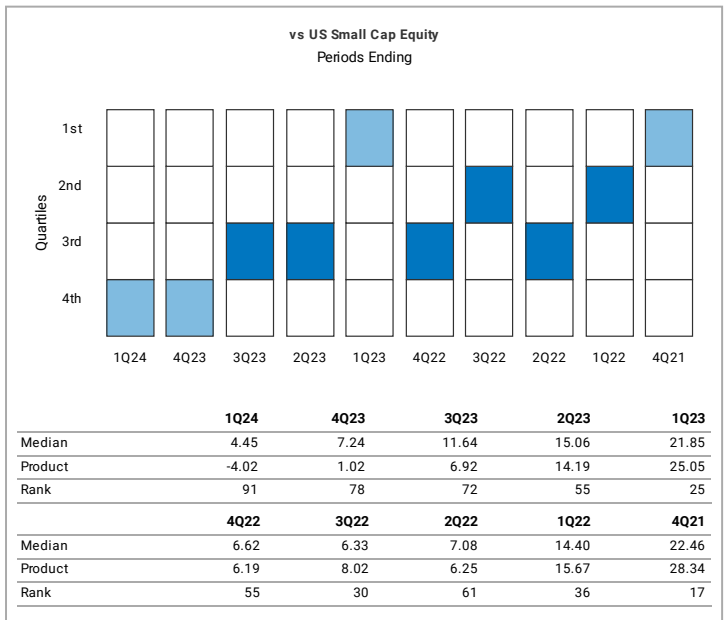
Universe Ranking Analysis: Annualized Returns



Universe Ranking Analysis: Calendar Year Returns



Universe Ranking Analysis: Rolling 3-Year Returns



Performance data displayed in Product Base Currency of US Dollar (USD) using Spot Rate (SR) conversion method.



eVestment Alliance, LLC and its affiliated entities (collectively "Nasdaq eVestment") collect information directly from investment management firms and other sources believed to be reliable, however, eVestment does not guarantee or warrant the accuracy, timeliness, or completeness of the information provided and is not responsible for any errors or omissions. Performance results may be provided with additional disclosures available on eVestment's systems and other important considerations such as fees that may be applicable. Not for general distribution and limited distribution may only be made pursuant to client's agreement terms. \* All categories not necessarily included, Totals may not equal 100%. Copyright © Nasdaq. All Rights Reserved.

**Essex Small Growth**

Track Record: USA - SA - Composite - Essex Small Growth - Gross of Fees Risk Index: Russell 2000 Growth Risk-Free Index: FTSE 3-Month T-Bill Frequency: Monthly

Product Base Currency of US Dollar (USD)

**General Information** **Key Facts**

Asset Class: United States - Equity  
 Primary Universe: eVestment US Small Cap Growth Equity  
 Marketing Contact: Ken Rogers  
 Title: Marketing Contact  
 Phone / Fax: 914-251-1084 /  
 Email Address: ken@arrowpartners.com

Primary Capitalization: Small Cap  
 Primary Style Emphasis: Growth  
 Preferred Benchmark: Russell 2000 Growth  
 Total Product Assets: \$222.3  
 Total Product Accounts: 11  
 Product Offered As: SA  
 Investment Focus: Long Only  
 Status: Active

**Peer Group Statistics & Ranking vs US Small Cap Equity**



	MRQ		YTD		1 Yr		3 Yrs		5 Yrs		7 Yrs		10 Yrs	
	Return	Rank	Return	Rank	Return	Rank	Return	Rank	Return	Rank	Return	Rank	Return	Rank
Essex Small Growth	6.55	44	6.55	44	9.41	94	-4.02	91	8.89	78	10.65	38	8.51	67
Russell 2000 Growth	7.58	31	7.58	31	20.35	47	-2.68	89	7.38	91	8.40	76	7.89	81
Universe Median	6.10	---	6.10	---	20.03	---	4.45	---	10.61	---	9.92	---	9.30	---

Performance data displayed in Product Base Currency of US Dollar (USD) using Spot Rate (SR) conversion method.



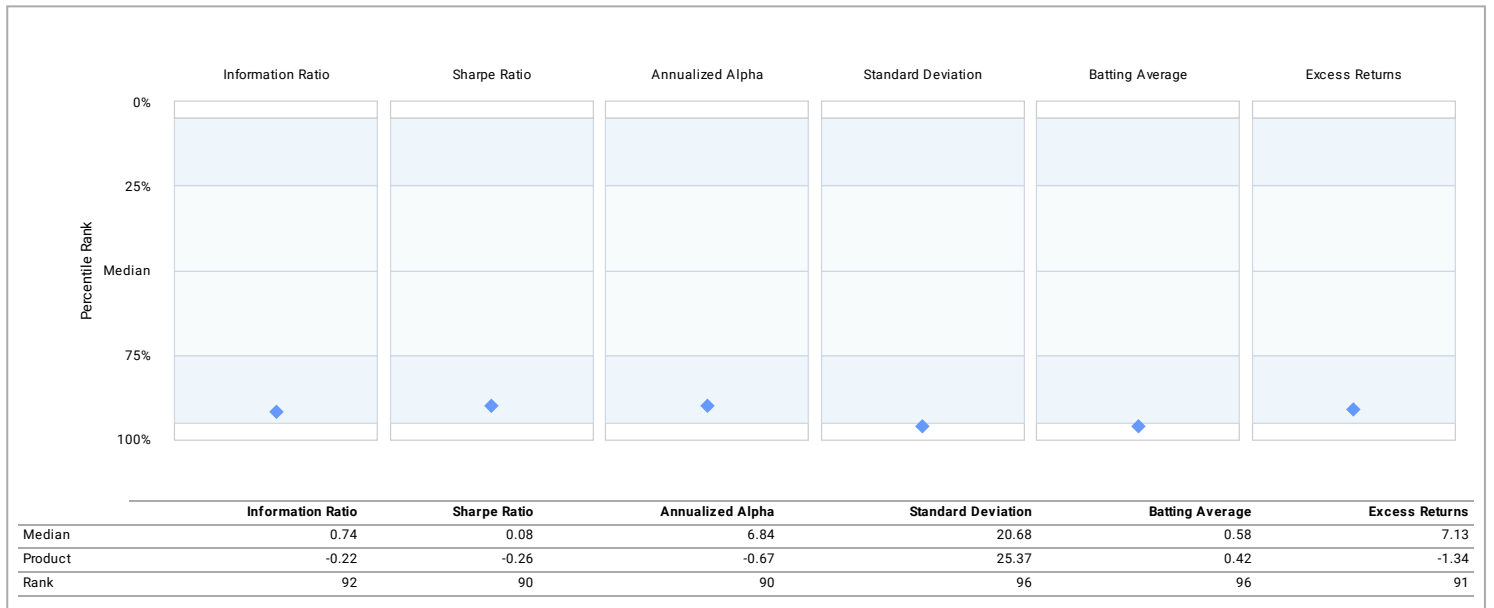
eVestment Alliance, LLC and its affiliated entities (collectively "Nasdaq eVestment") collect information directly from investment management firms and other sources believed to be reliable, however, eVestment does not guarantee or warrant the accuracy, timeliness, or completeness of the information provided and is not responsible for any errors or omissions. Performance results may be provided with additional disclosures available on eVestment's systems and other important considerations such as fees that may be applicable. Not for general distribution and limited distribution may only be made pursuant to client's agreement terms. \* All categories not necessarily included, Totals may not equal 100%. Copyright © Nasdaq. All Rights Reserved.

Essex Small Growth

Product Base Currency of US Dollar (USD)

Track Record: USA - SA - Composite - Essex Small Growth - Gross of Fees Risk Index: Russell 2000 Growth Risk-Free Index: FTSE 3-Month T-Bill Frequency: Monthly

Three Year Statistics vs US Small Cap Equity vs Russell 2000 Growth



Performance data displayed in Product Base Currency of US Dollar (USD) using Spot Rate (SR) conversion method.



eVestment Alliance, LLC and its affiliated entities (collectively "Nasdaq eVestment") collect information directly from investment management firms and other sources believed to be reliable, however, eVestment does not guarantee or warrant the accuracy, timeliness, or completeness of the information provided and is not responsible for any errors or omissions. Performance results may be provided with additional disclosures available on eVestment's systems and other important considerations such as fees that may be applicable. Not for general distribution and limited distribution may only be made pursuant to client's agreement terms. \* All categories not necessarily included, Totals may not equal 100%. Copyright © Nasdaq. All Rights Reserved.

Essex Small Growth

Track Record: USA - SA - Composite - Essex Small Growth - Gross of Fees Risk Index: Russell 2000 Growth Risk-Free Index: FTSE 3-Month T-Bill Frequency: Monthly

Product Base Currency of US Dollar (USD)

General Information

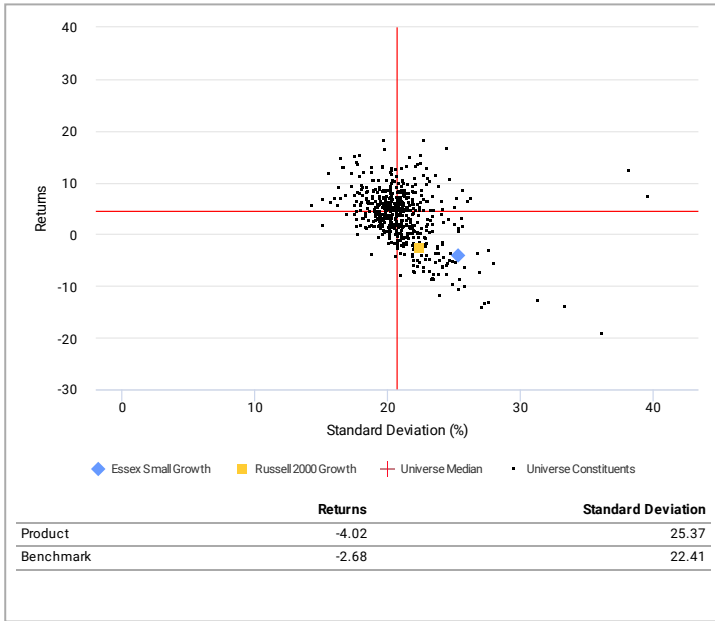
Asset Class: United States - Equity  
 Primary Universe: eVestment US Small Cap Growth Equity  
 Marketing Contact: Ken Rogers  
 Title: Marketing Contact  
 Phone / Fax: 914-251-1084 /  
 Email Address: ken@arrowpartners.com

Key Facts

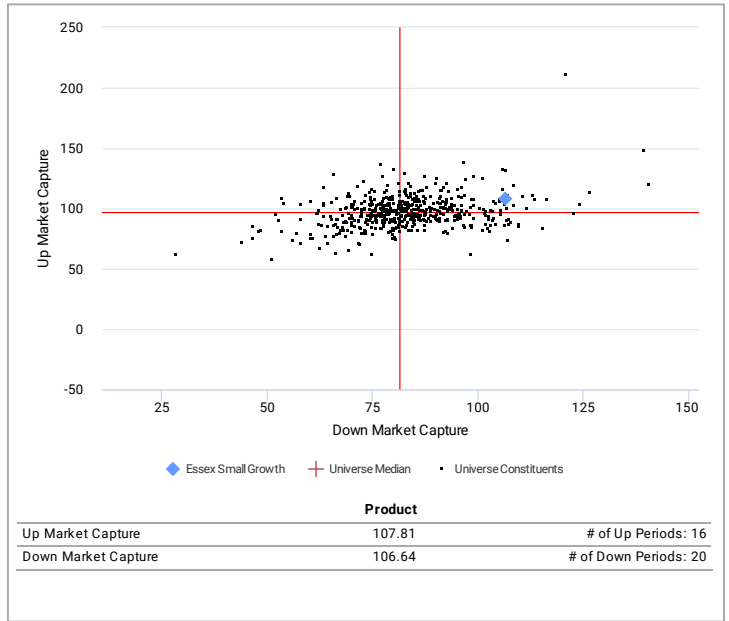
Primary Capitalization: Small Cap  
 Primary Style Emphasis: Growth  
 Preferred Benchmark: Russell 2000 Growth  
 Total Product Assets: \$222.3  
 Total Product Accounts: 11  
 Product Offered As: SA  
 Investment Focus: Long Only  
 Status: Active

Risk vs Reward & Market Capture Analysis: 3 Years vs US Small Cap Equity

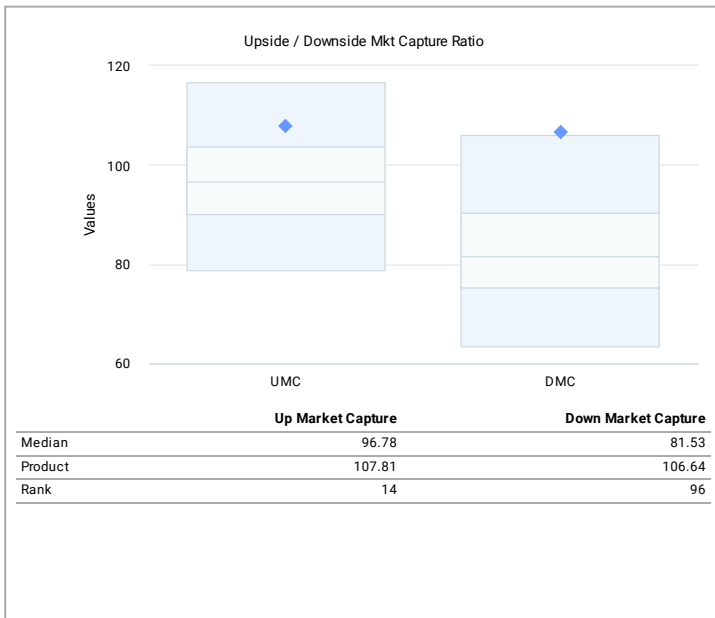
Risk vs Reward



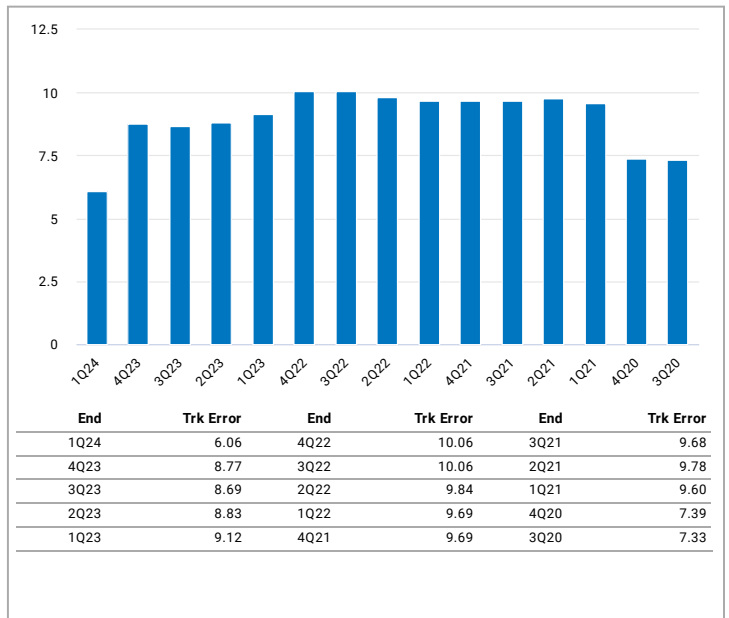
Up vs Down Market Capture



Market Capture Analysis: 3 Years



Tracking Error: Rolling 3-Year Periods



Performance data displayed in Product Base Currency of US Dollar (USD) using Spot Rate (SR) conversion method.



eVestment Alliance, LLC and its affiliated entities (collectively "Nasdaq eVestment") collect information directly from investment management firms and other sources believed to be reliable, however, eVestment does not guarantee or warrant the accuracy, timeliness, or completeness of the information provided and is not responsible for any errors or omissions. Performance results may be provided with additional disclosures available on eVestment's systems and other important considerations such as fees that may be applicable. Not for general distribution and limited distribution may only be made pursuant to client's agreement terms. \* All categories not necessarily included, Totals may not equal 100%. Copyright © Nasdaq. All Rights Reserved.